

QA-1014 Sales Kits

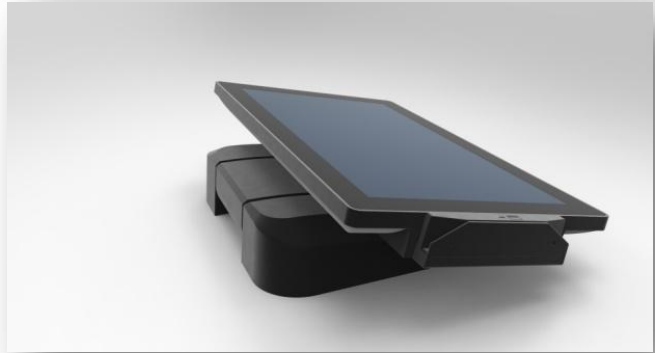
14" All-in-One Android POS



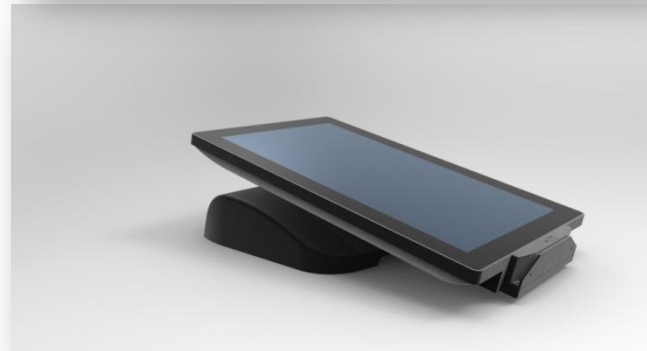
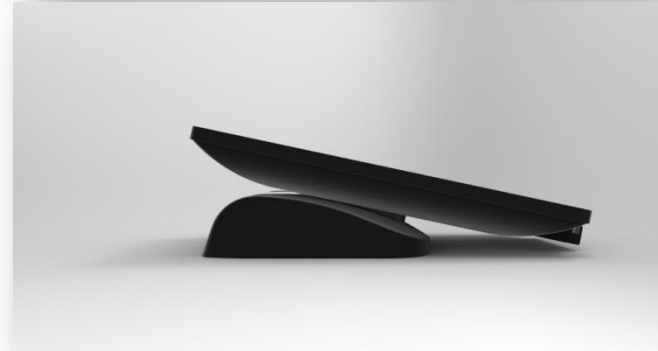
Contents

- Outlook Appearance
- Features
- Spec
- Dimension

Outlook Appearance - Landscape Views



Outlook Appearance – Portrait Views



Features

1. Industrial Android motherboard for reliability and durability
2. Foldable to become Wedge POS
3. True-Flat Resistive Touch Technology (Single Core)
True-Flat Projected Capacitive Technology (Dual Core)
1. Fanless & Stylish design
2. IP65 (Front only)
3. Rich I/O and rich peripheral options
4. Die-casting stand for optimum stability
5. Cable cover to help preventing unwanted tempering
6. Wide tilt angle customer display for easy and comfortable viewing
7. Standard 75 x 75 VESA holes for pole-, wall-, and stand- mountings
8. Rotatable Display for landscape and portrait displays
9. Low Power Consumption
10. Low total cost of ownership

Features - Optional

1. Rich peripherals:
 - MSR,
 - VFD 2x20 Customer Display
2. Dual stereo speakers

Features – Wedge POS



Foldable to become a Wedge POS



Feature - IP65



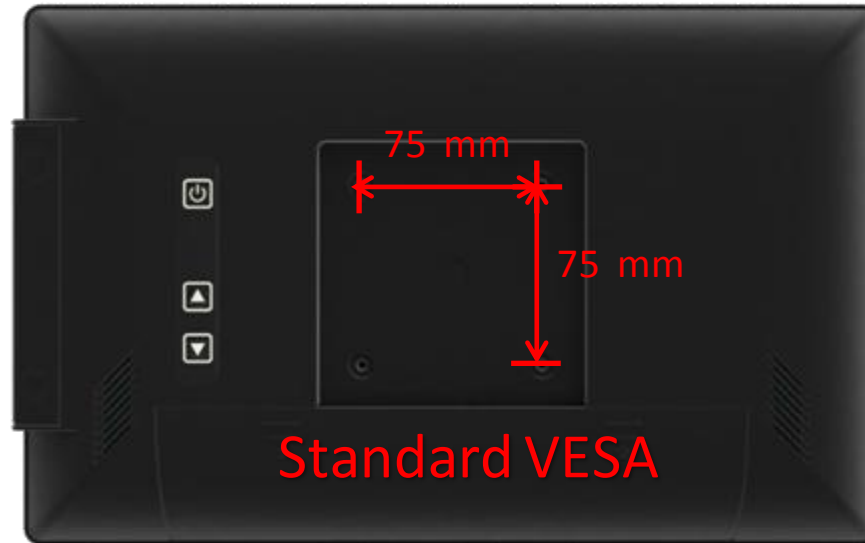
IP 65 (Front side)

Features – Cable Cover



Smart cable management keeps messy cords organized and out of sight.

Features – Mounting Options



Stand-Mount

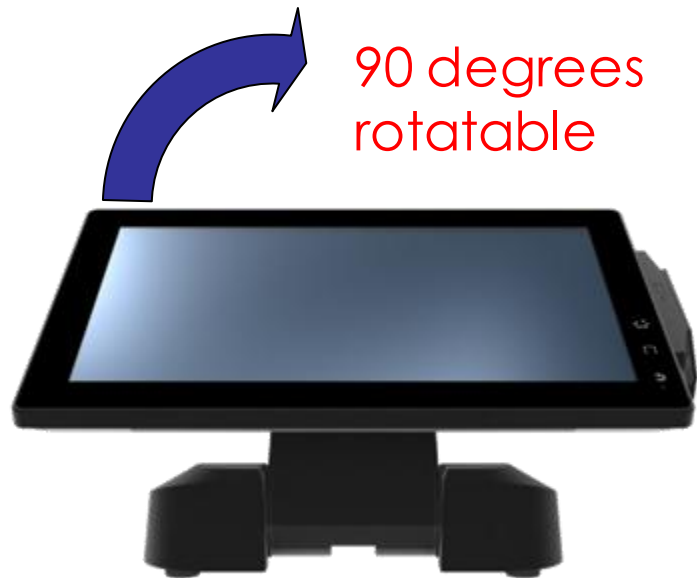


Pole-Mount

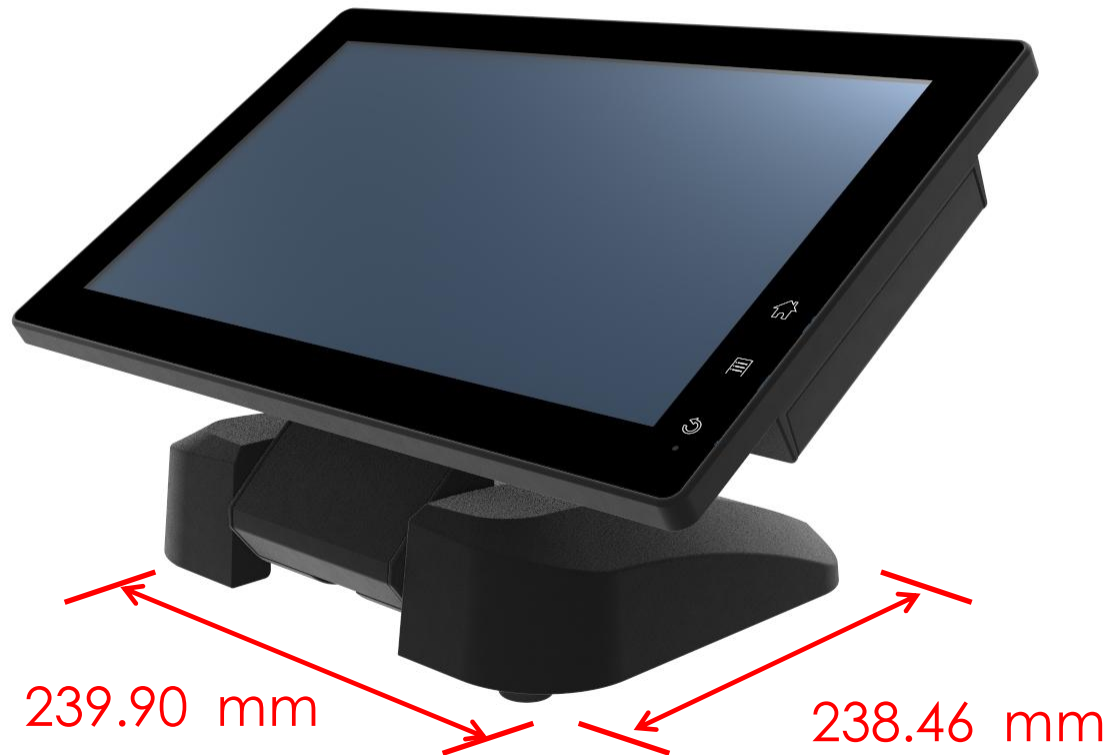


Wall-Mount

Features – Rotatable Display



Features – Small Footprint



Features – Rich Peripheral Options

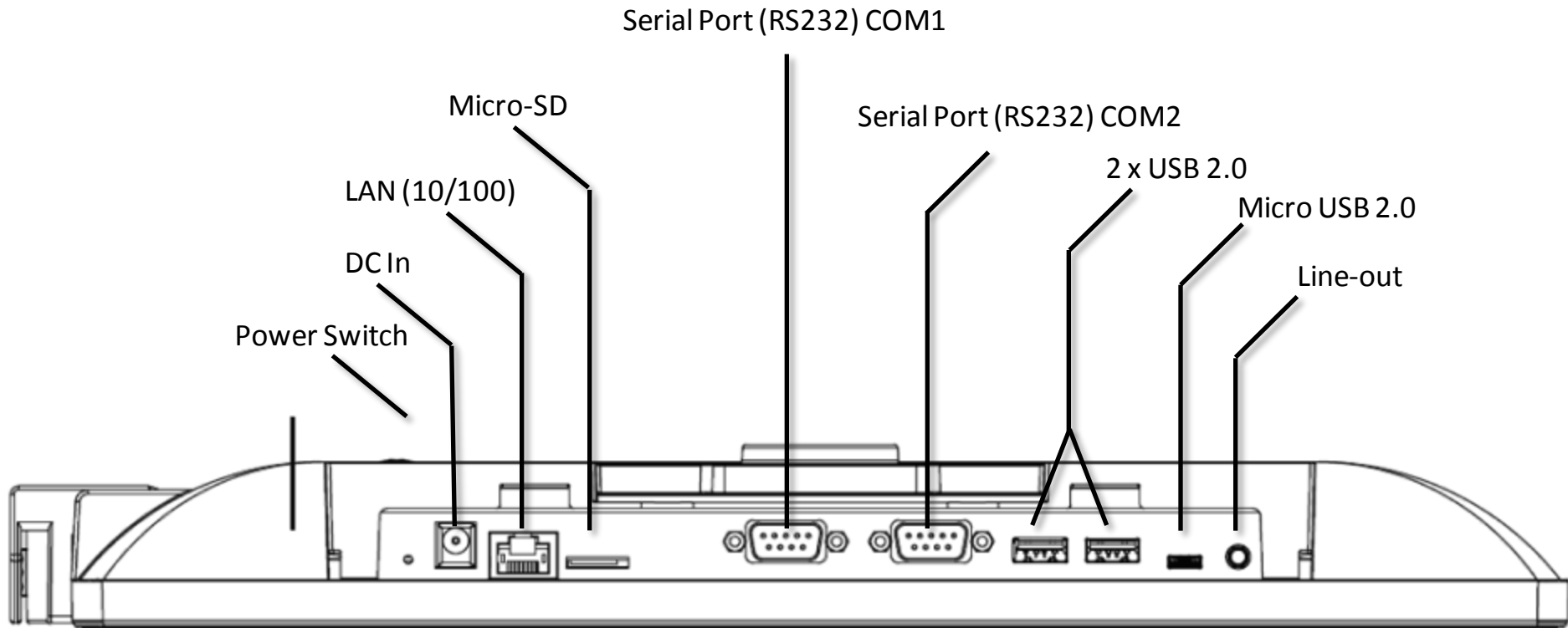
- MSR



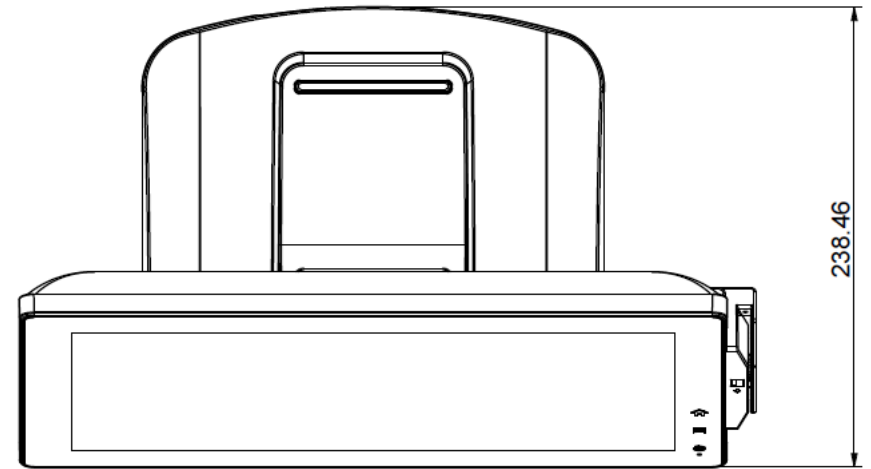
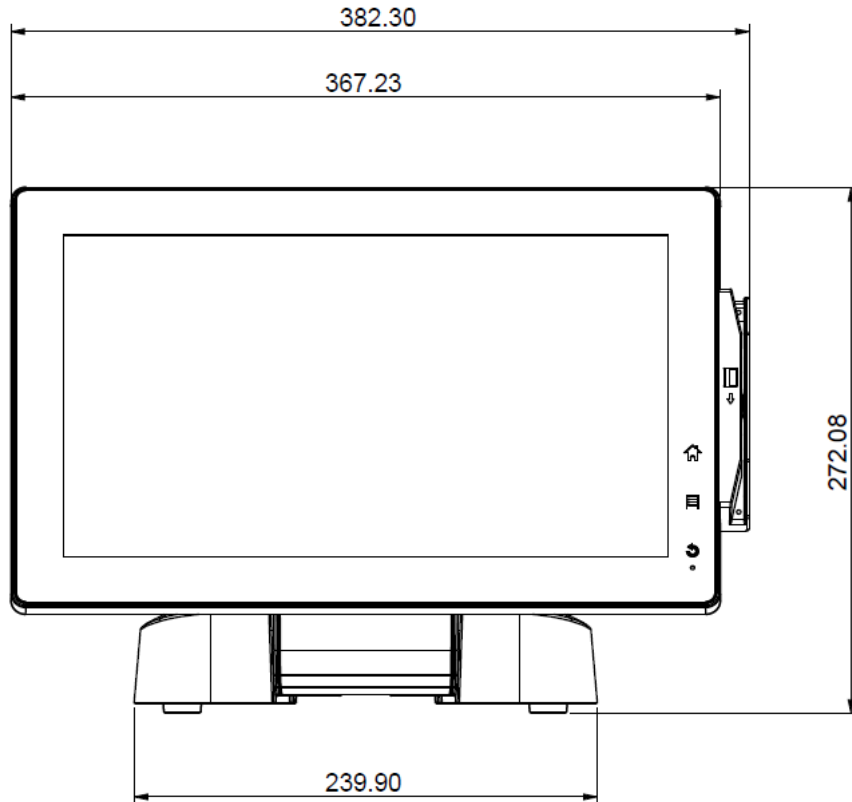
- Customer Display (Rear and Front mountable)



Features – Rich I/O



Dimensions



Dimension (W x D x H) = 367.23 x 238.46 x 272.08 mm (14.5" x 9.4" x 10.7")

Product Specs

QuriPOS		QA1014	
CPU Support		ARM Cortex A8 - 1.0GHz	ARM Cortex A7 - 1.2GHz Dual-Core
System Memory		DDR3, 1GB	
Storage	NAND FLASH	MLC NAND FLASH 4GB (on board)	MLC NAND FLASH/eMMC 8GB (on board)
	Micro SD	1 x Micro SD slot (Max. 32GB)	
LCD	Size	14" TFT LED LCD Panel (Wide)	
	Brightness	200cd/m2 (Typ.)	
	Resolution	1366 x 768	
Touch Screen		True-Flat Resistive	Projected Capacitive
Tilt Angle		0 ~ 110 degree	
External I/O Port	Rear	2 x USB 2.0 Ports	
		1 x Micro USB 2.0 Port (For image update usage ONLY)	
		2 x Serial port (RS232);(COM2 0/5V/12V)	
		1 x LAN (10/100)	1 x LAN (10/100/1000)
		1 x Line-out	
		1 x Power Switch	
Speaker		2 x 2W speaker	
Power		External power adapter,50W/12V	
EMC Safety		CE, FCC Class A	
Environment	Operating Temperature	0℃ ~ 35℃	
	Storage Temperature	-20℃ ~ 60℃	
	Operating Humidity	20% - 85% RH non condensing	
	Storage Humidity	20% - 85% RH non condensing	
OS Support		Android 4.1	Android 4.2
Dimension (W x D x H)	Landscape	382 x 265 x 106 mm (Wedge POS)	
		382 x 240 x 262 mm	
	Portrait	240 x 375 x 120 mm (Wedge POS)	
		240 x 267 x 333 mm (Tilt angle at 70 degree)	
Weight (N.W./G.W.)		4kgs / 5kgs	
Wall Mount		VESA 75 x 75mm	

Thank you!